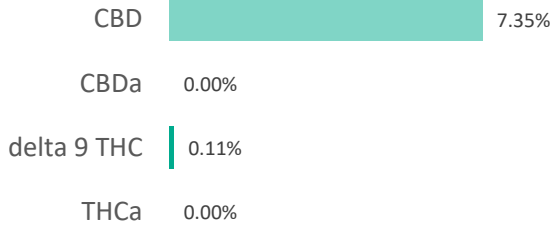
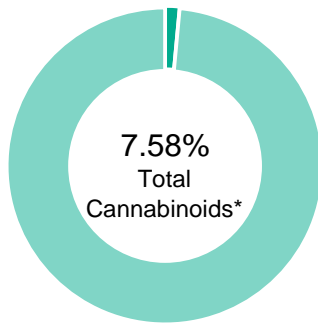


**EXTRA STRENGTH LEMON TINCTURE**

<b>Batch ID:</b>	200107007	<b>Test ID:</b>	6989439.0054
<b>Reported:</b>	11-Dec-2019	<b>Method:</b>	TM14
<b>Type:</b>	Concentrate		
<b>Test:</b>	Potency		

**CANNABINOID PROFILE**


Compound	LOQ (%)	Result (%)	Result (mg/g)
Delta 9-Tetrahydrocannabinolic acid (THCA-A)	0.08	0.00	0.0
Delta 9-Tetrahydrocannabinol (Delta 9THC)	0.04	0.11	1.1
Cannabidiolic acid (CBDA)	0.08	0.00	0.0
Cannabidiol (CBD)	0.04	7.35	73.5
Delta 8-Tetrahydrocannabinol (Delta 8THC)	0.05	0.00	0.0
Cannabinolic Acid (CBNA)	0.11	0.00	0.0
Cannabinol (CBN)	0.05	0.00	0.0
Cannabigerolic acid (CBGA)	0.07	0.00	0.0
Cannabigerol (CBG)	0.04	0.00	0.0
Tetrahydrocannabivarinic Acid (THCVA)	0.07	0.00	0.0
Tetrahydrocannabivarin (THCV)	0.04	0.00	0.0
Cannabidivarinic Acid (CBDVA)	0.07	0.00	0.0
Cannabidivarin (CBDV)	0.04	0.00	0.0
Cannabichromenic Acid (CBCA)	0.06	0.00	0.0
Cannabichromene (CBC)	0.07	0.12	1.2
<b>Total Cannabinoids</b>		<b>7.58</b>	<b>75.80</b>
Total Potential THC**		0.11	1.10
Total Potential CBD**		7.35	73.50


**NOTES:**

N/A

% = % (w/w) = Percent (Weight of Analyte / Weight of Product)


\* Total Cannabinoids result reflects the absolute sum of all cannabinoids detected.

\*\* Total Potential THC/CBD is calculated using the following formulas to take into account the loss of a carboxyl group during decarboxylation step.

$$\text{Total THC} = \text{THC} + (\text{THCa} * (0.877)) \text{ and } \text{Total CBD} = \text{CBD} + (\text{CBDa} * (0.877))$$
**FINAL APPROVAL**


Tyler Wiese  
11-Dec-2019  
5:12 PM

PREPARED BY / DATE



Greg Zimpfer  
11-Dec-2019  
5:16 PM

APPROVED BY / DATE

Testing results are based solely upon the sample submitted to Botanacor Laboratories, LLC, in the condition it was received. Botanacor Laboratories, LLC warrants that all analytical work is conducted professionally in accordance with all applicable standard laboratory practices using validated methods. Data was generated using an unbroken chain of comparison to NIST traceable Reference Standards and Certified Reference Materials. This report may not be reproduced, except in full, without the written approval of Botanacor Laboratories, LLC. ISO/IEC 17025:2005 Accredited A2LA Certificate Number 4329.02



CBD Tincture Lemon 2000ml 30ml 200107007

Sample Received:	13-Feb-20	Sample Type:	Tincture
Analysis Reported:	18-Feb-20	Test:	Residual Solvents




**RESIDUAL SOLVENTS**

SOLVENT	REPORTABLE RANGE	RESULT (ppm)
Acetone	100-2000	0.00
Benzene	0.2-4	0.00
Butanes	100-2000	0.00
Ethanol	100-2000	0.00
Heptane	100-2000	0.00
Hexanes	6-120	0.00
Isopropyl Alcohol	100-2000	0.00
Pentane	100-2000	0.00
Propane	100-2000	0.00
Toluene	18-360	0.00
Xylenes	43-860	0.00

**REMARKS**

Passed visual inspection for particulates, mold, mildew, and other foreign substances.

**FINAL AUTHORIZATION**

 02/19/20	 02/19/20	 02/19/20
ANALYZED BY/DATE	AUTHORIZED BY / DATE	RELEASED BY/DATE

Laboratory results are based on the sample submitted to Extract Labs, LLC, in the condition it was received. Extract Labs, LLC warrants that all analyses performed were done in a professional manner in accordance with all relevant standard laboratory practices and good manufacturing practices. Extract Labs, LLC is currently in the process of obtaining ISO 17025 accreditation but has not yet been obtained. All data was generated using certified reference materials and NIST traceable reference standards. Report can only be reproduced with the written consent of Extract Labs, LLC.



## CBD LEMON TINCTURE 2000mg/30ml

<b>Batch ID:</b>	19T1090512	<b>Test ID:</b>	T000058589
<b>Reported:</b>	9-Feb-2020	<b>Method:</b>	Edible - Test Methods: TM05, TM06
<b>Type:</b>	Edible		
<b>Test:</b>	Microbial Contaminants		

## MICROBIAL CONTAMINANTS

Contaminant	Result (CFU/g)*
<b>Total Aerobic Count**</b>	None Detected
<b>Total Coliforms**</b>	None Detected
<b>Total Yeast and Molds**</b>	None Detected
<b>E. coli</b>	None Detected
<b>Salmonella</b>	None Detected

\* CFU/g = Colony Forming Unit per Gram


\*\* Values recorded in scientific notation, a common microbial practice of expressing numbers that are too large to be conveniently written in decimal form.

Examples:  $10^2 = 100$  CFU  
 $10^3 = 1,000$  CFU  
 $10^4 = 10,000$  CFU  
 $10^5 = 100,000$  CFU

## NOTES:

Free from visual mold, mildew, and foreign matter  
TYM: None Detected  
Total Aerobic: None Detected  
Coliforms: None Detected

## FINAL APPROVAL

  
Robert Belfon  
8-Feb-2020  
8:06 PM  
Mike Branvold  
9-Feb-2020  
6:51 AM

PREPARED BY / DATE

APPROVED BY / DATE

Testing results are based solely upon the sample submitted to Botanacor Laboratories, LLC, in the condition it was received. Botanacor Laboratories, LLC warrants that all analytical work is conducted professionally in accordance with all applicable standard laboratory practices using validated methods. Data was generated using an unbroken chain of comparison to NIST traceable Reference Standards and Certified Reference Materials. This report may not be reproduced, except in full, without the written approval of Botanacor Laboratories, LLC. ISO/IEC 17025:2005 Accredited A2LA Certificate Number 4329.03



Certificate #4329.03



**EXTRACT LABS**  
AMERICAN HEMP

3620 Walnut Street  
Boulder, CO 80301  
(303) 927-6130

## Product Specification

Extra Strength Lemon Hemp Tincture – 1000mg/15ml, 2000mg/30ml,  
4000mg/60ml

### Product Information

Product	Extra Strength Lemon Hemp Tincture
Botanical name	<i>Cannabis sativa</i> L.
Plant Part	Flower
Country of Origin	USA
Extraction Process	CO2 Extraction, Winterization
Ingredient Statement	Organic Fractionated Coconut Oil, CO2-Extracted Full Spectrum Hemp Oil, Natural Flavors (Sunflower Oil, Natural Flavor)

### Organoleptic Description

Appearance	Light to dark amber oil liquid
Aroma	Typical
Taste	Characteristic

### Physical Characteristics

Cannabidiol Content (CBD):	>1000mg/15ml, >2000mg/30ml, >4000mg/60ml
Tetrahydrocannabinol Content (THC):	<0.3%

### Shelf Life

Shelf life in original glass bottle for up to 1 year.

### Packaging

15ml, 30ml, and 60ml packaged in clear glass dropper bottles  
Secondary packaging in cardboard boxes.  
Larger quantities by arrangement

### Recommended Storage Conditions

Store at ambient conditions in airtight container.

### Kosher Certification

Extra Strength Lemon Hemp Tincture is certified Kosher by the Orthodox Union,  
UKD-ID: OUFYG1P.

### GMP Certification

This product was produced in a cGMP Compliant Facility, audited through Eurofins, Certificate #4949.

**Vegan Certification**

Extra Strength Hemp Tincture is certified Vegan by Vegan Action, certificate #8559160.

I declare that the information given is believed to be correct as of date specified below.

Name: Alyssa Rosenblum

Title: Quality Manager

Date: January 8<sup>th</sup>, 2020